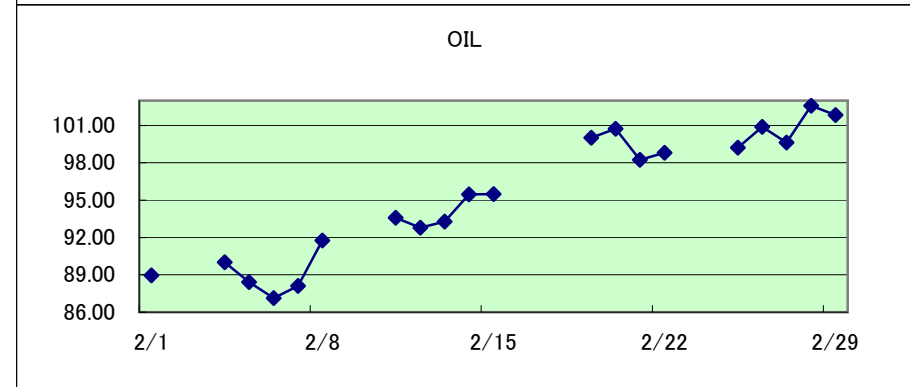
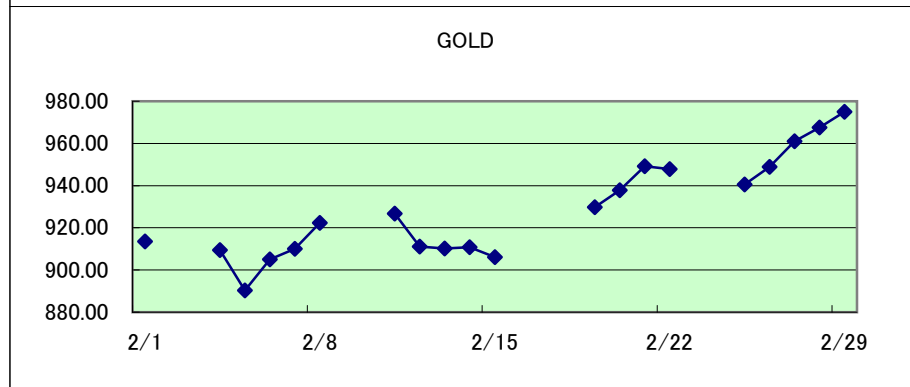
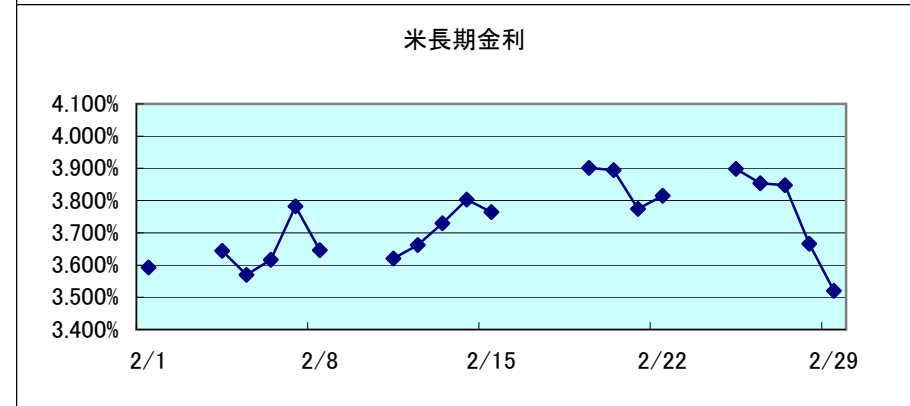
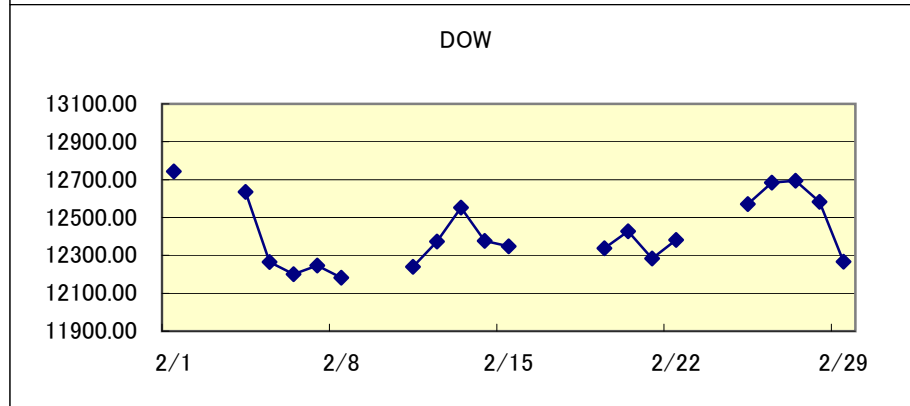
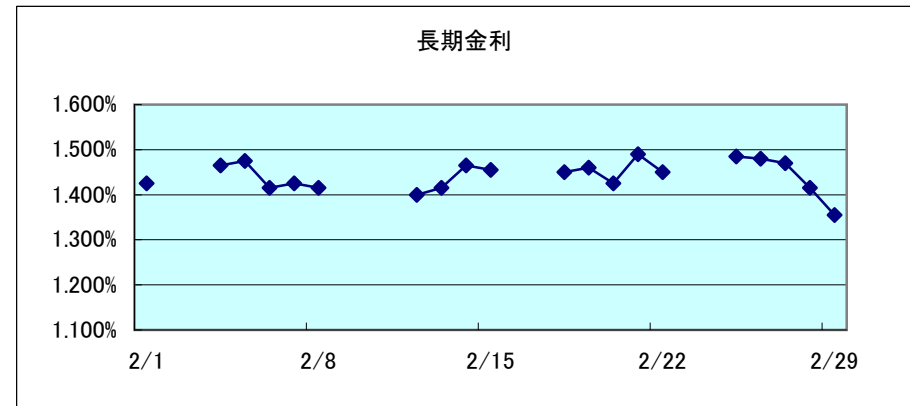
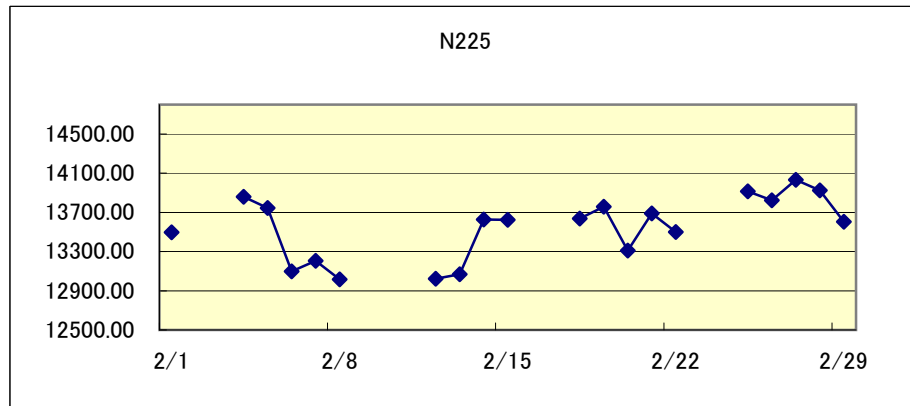


# 関連市場の値動き

作成:徹底比較 外為会社  
<http://o4-1.com/>



2008

月日	N225	長期金利	DOW	米長期金利	GOLD	OIL	USD/JPY	EUR/JPY	AUD/JPY	NZD/JPY	GBP/JPY	CAD/JPY	CHF/JPY	EUR/USD
2/1	13497.16	1.425%	12743.19	3.5926%	913.50	88.96	106.60	157.75	96.41	84.58	209.52	107.23	97.81	1.4794
2/2														
2/3														
2/4	13859.70	1.465%	12635.16	3.6444%	909.40	90.02	106.64	158.16	96.91	84.54	210.45	107.34	98.01	1.4829
2/5	13745.50	1.475%	12265.13	3.5701%	890.30	88.41	106.75	156.35	95.73	83.36	209.71	106.06	97.07	1.4641
2/6	13099.24	1.415%	12200.10	3.6163%	905.00	87.14	106.57	155.94	95.61	83.71	209.02	105.96	97.05	1.4631
2/7	13207.15	1.425%	12247.00	3.7818%	910.00	88.11	107.48	155.62	96.06	84.60	208.76	106.44	97.29	1.4476
2/8	13017.24	1.415%	12182.13	3.6465%	922.30	91.77	107.33	155.72	96.03	84.51	208.86	107.38	97.32	1.4507
2/9														
2/10														
2/11			12240.01	3.6201%	926.70	93.59	106.92	155.31	96.65	84.35	208.69	106.75	97.03	1.4523
2/12	13021.96	1.400%	12373.41	3.6617%	911.10	92.78	107.33	156.48	96.98	84.88	210.40	107.13	97.40	1.4576
2/13	13068.30	1.415%	12552.24	3.7301%	910.20	93.27	108.32	157.81	97.04	84.90	212.66	108.60	97.72	1.4568
2/14	13626.45	1.465%	12376.98	3.8029%	910.80	95.46	107.88	157.95	97.27	85.05	212.43	107.92	98.27	1.4637
2/15	13622.56	1.455%	12348.21	3.7647%	906.10	95.50	107.74	158.18	97.92	85.22	211.32	107.05	98.60	1.4678
2/16														
2/17														
2/18	13635.40	1.450%					108.20	158.62	98.81	85.98	211.31	107.40	98.19	1.4656
2/19	13757.91	1.460%	12337.22	3.9017%	929.80	100.01	107.72	158.67	98.99	85.92	209.89	105.93	98.42	1.4724
2/20	13310.37	1.425%	12427.26	3.8941%	937.80	100.74	108.12	159.04	99.31	86.23	209.95	106.71	98.27	1.4706
2/21	13688.28	1.490%	12284.30	3.7745%	949.20	98.23	107.37	159.05	98.66	85.94	210.77	106.20	98.49	1.4810
2/22	13500.46	1.450%	12381.02	3.8150%	947.80	98.81	107.11	158.92	99.01	86.73	210.75	105.75	98.70	1.4833
2/23														
2/24														
2/25	13914.57	1.485%	12570.22	3.8983%	940.50	99.23	108.06	160.23	100.16	87.70	212.61	108.57	99.23	1.4825
2/26	13824.72	1.480%	12684.92	3.8538%	948.90	100.88	107.24	160.67	100.13	87.44	213.08	109.25	99.74	1.4980
2/27	14031.30	1.470%	12694.28	3.8481%	961.00	99.64	106.44	160.95	100.25	86.92	210.80	108.59	100.12	1.5119
2/28	13925.51	1.415%	12582.18	3.6659%	967.50	102.59	105.25	160.07	99.85	85.82	209.61	107.92	100.18	1.5208
2/29	13603.02	1.355%	12266.39	3.5205%	975.00	101.84	103.80	157.65	96.66	82.95	206.46	105.26	99.78	1.5186

※ N225…日経平均、長期金利…日本10年国債利回り、DOW…米ダウ平均、米長期金利…米10年国債利回り、GOLD…NY金先物相場、OIL…NY原油先物相場

※ 日付表示の青字は土曜日、赤字は日祝日（東京市場）。各数値の表示は青…前日比プラス、白…前日比同じ、赤…前日比マイナス