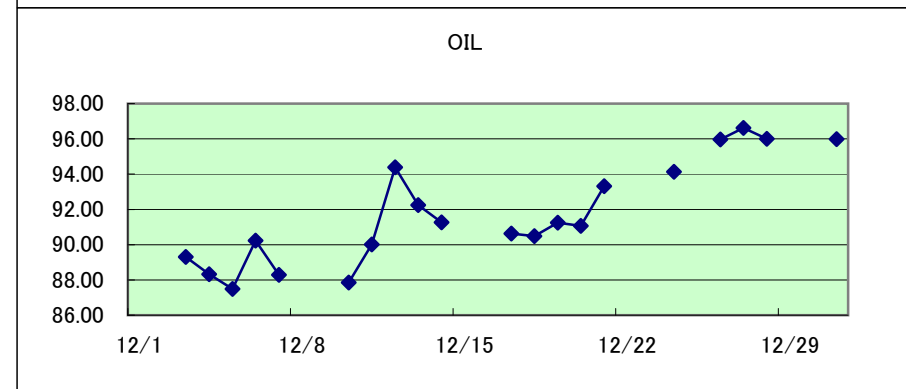
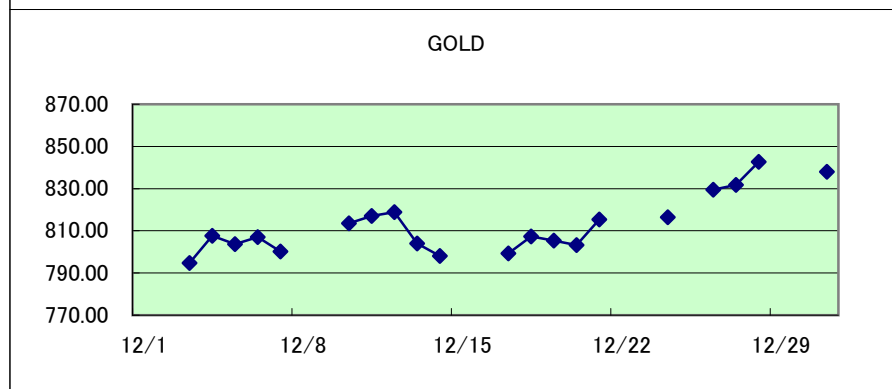
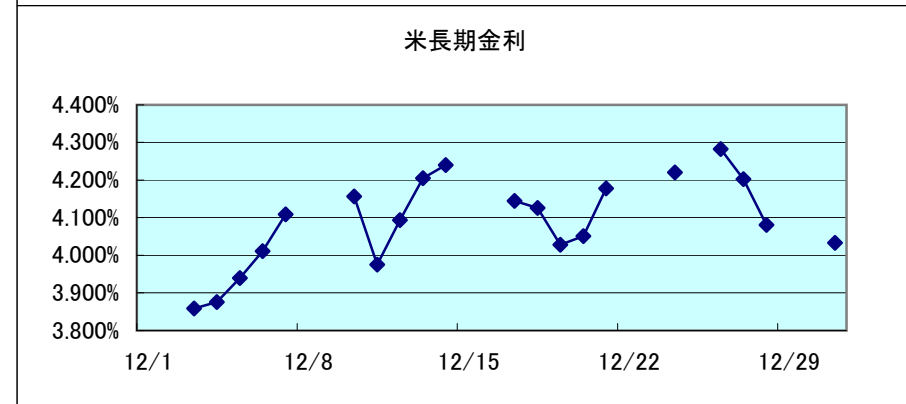
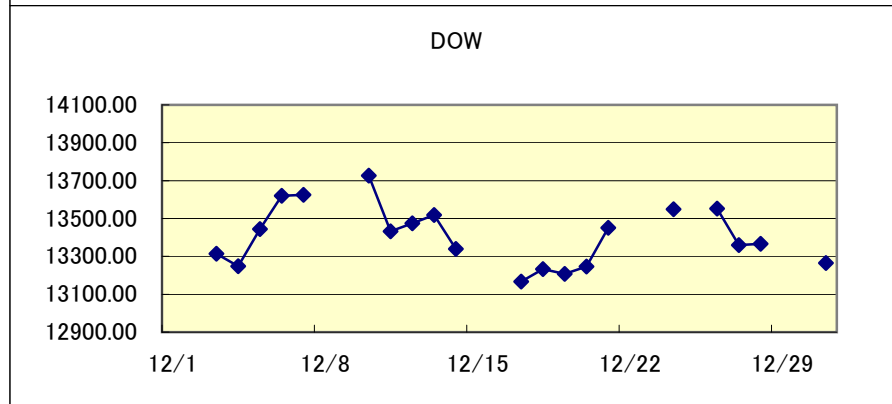
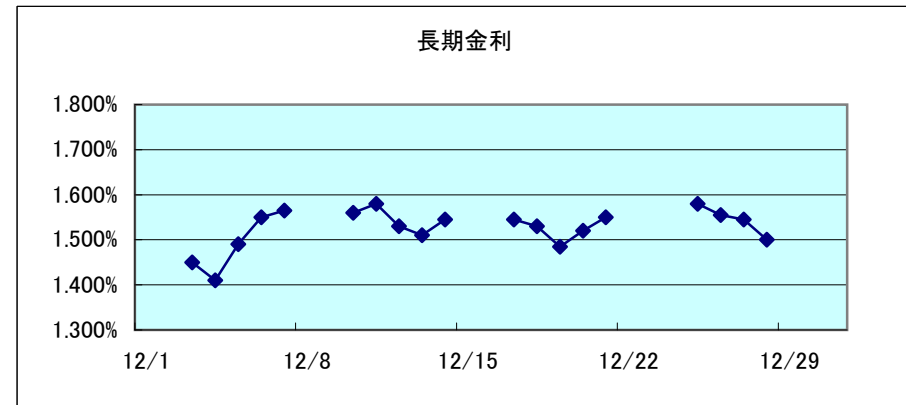
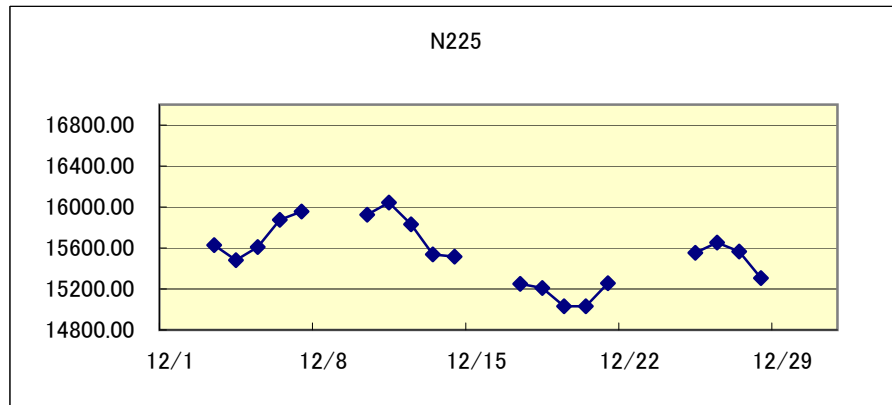


# 関連市場の値動き

作成: 徹底比較 外為会社  
<http://o4-1.com/>



2007

月日	N225	長期金利	DOW	米長期金利	GOLD	OIL	USD/JPY	EUR/JPY	AUD/JPY	NZD/JPY	GBP/JPY	CAD/JPY	CHF/JPY	EUR/USD
12/1														
12/2														
12/3	15628.97	1.450%	13314.57	3.8590%	794.70	89.31	110.44	162.02	97.17	84.23	228.26	110.43	97.98	1.4667
12/4	15480.19	1.410%	13248.73	3.8757%	807.60	88.32	109.70	161.99	95.80	83.63	225.88	108.37	98.26	1.4764
12/5	15608.88	1.490%	13444.96	3.9396%	803.70	87.49	110.88	162.05	96.40	85.24	224.73	109.51	98.37	1.4611
12/6	15874.08	1.550%	13619.89	4.0114%	807.10	90.23	111.23	162.70	97.68	86.44	225.45	110.26	98.43	1.4629
12/7	15956.37	1.565%	13625.58	4.1087%	800.20	88.28	111.67	163.67	97.93	86.61	226.75	111.15	98.95	1.4653
12/8														
12/9														
12/10	15924.39	1.560%	13727.03	4.1567%	813.50	87.86	111.70	164.37	98.87	87.28	228.56	110.91	99.06	1.4710
12/11	16044.72	1.580%	13432.77	3.9750%	817.10	90.02	110.67	162.19	96.54	85.58	225.15	109.08	97.85	1.4653
12/12	15832.26	1.530%	13473.90	4.0932%	818.80	94.39	112.16	164.94	98.94	88.52	229.58	110.77	98.80	1.4705
12/13	15536.52	1.510%	13517.96	4.2050%	804.00	92.25	112.17	164.07	98.24	87.58	228.96	109.89	98.29	1.4624
12/14	15514.51	1.545%	13339.85	4.2399%	798.00	91.27	113.28	163.46	97.52	86.70	228.55	111.42	98.22	1.4426
12/15														
12/16														
12/17	15249.79	1.545%	13167.20	4.1449%	799.30	90.63	112.94	162.63	96.79	85.21	228.40	112.32	98.26	1.4398
12/18	15207.86	1.530%	13232.47	4.1256%	807.40	90.49	113.34	163.37	97.56	85.63	228.29	112.71	98.37	1.4412
12/19	15030.51	1.485%	13207.27	4.0278%	805.40	91.24	113.41	163.03	97.35	85.57	226.57	113.01	98.12	1.4371
12/20	15031.60	1.520%	13245.64	4.0507%	803.20	91.06	113.14	162.02	97.09	85.79	224.41	113.04	97.66	1.4320
12/21	15257.00	1.550%	13450.65	4.1776%	815.40	93.31	114.13	164.00	98.91	87.02	226.36	114.95	98.73	1.4372
12/22														
12/23														
12/24			13549.33	4.2203%	816.50	94.13	114.27	164.52	99.51	87.55	225.90	115.99	98.71	1.4396
12/25	15552.59	1.580%					114.16	164.34	99.42	87.41	225.64	115.76	98.52	1.4393
12/26	15653.54	1.555%	13551.69	4.2827%	829.50	95.97	114.30	165.62	99.94	87.59	226.75	116.52	99.27	1.4487
12/27	15564.69	1.545%	13359.61	4.2027%	831.80	96.62	113.69	166.25	99.73	87.60	226.85	115.90	99.78	1.4620
12/28	15307.78	1.500%	13365.87	4.0808%	842.70	96.00	112.37	165.42	98.35	86.96	224.23	114.51	99.71	1.4718
12/29														
12/30														
12/31			13264.82	4.0328%	838.00	95.98	111.70	163.10	97.97	85.66	221.63	112.50	98.56	1.4598

※ N225…日経平均、長期金利…日本10年国債利回り、DOW…米ダウ平均、米長期金利…米10年国債利回り、GOLD…NY金先物相場、OIL…NY原油先物相場

※ 日付表示の青字は土曜日、赤字は日祝日（東京市場）。各数値の表示は青…前日比プラス、白…前日比同じ、赤…前日比マイナス