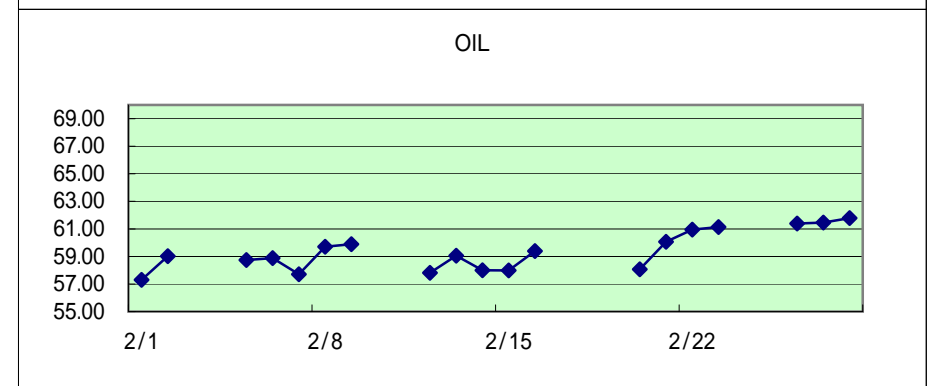
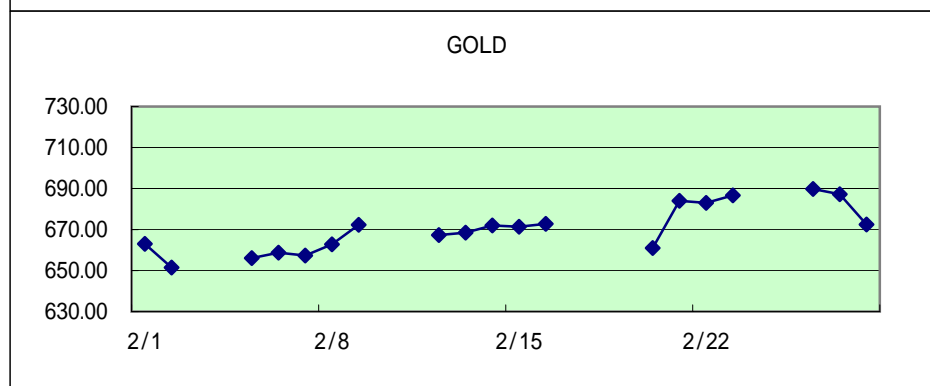
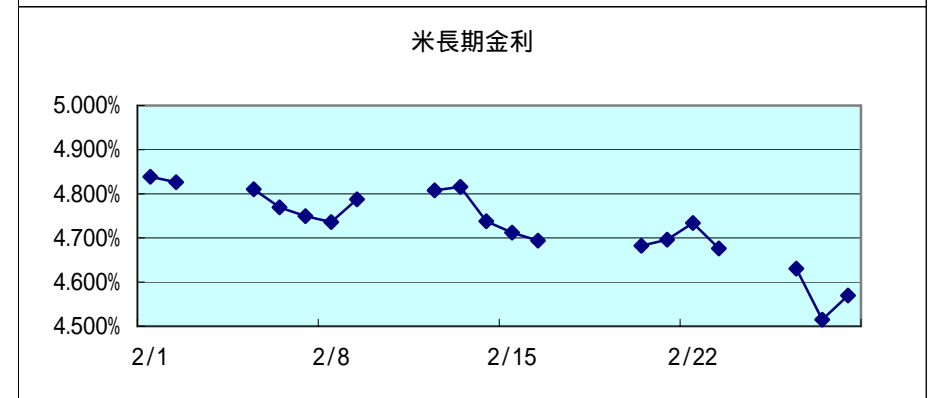
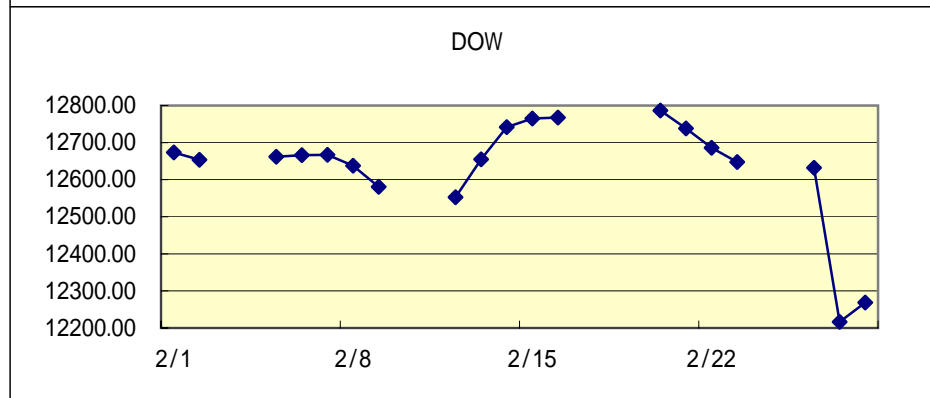
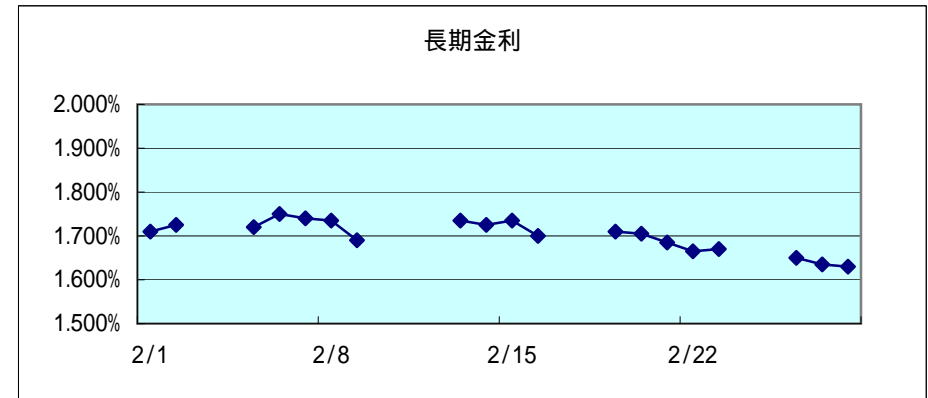
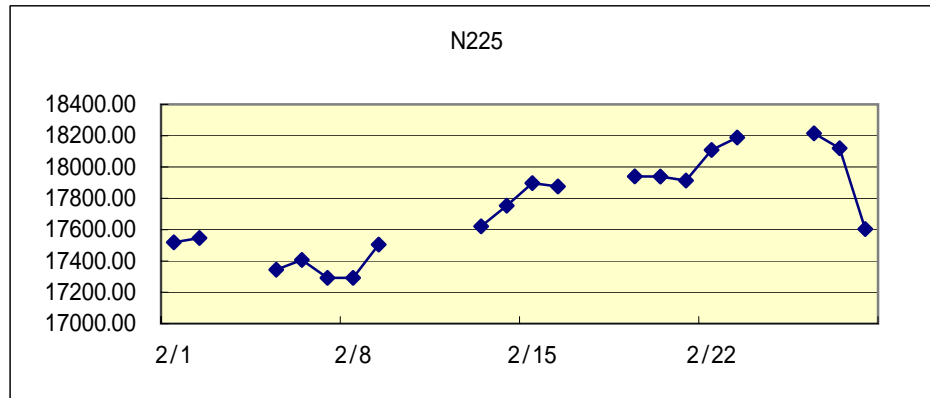


# 関連市場の値動き

作成: 徹底比較 外為会社  
<http://o4-1.com/>



2007

月日	N225	長期金利	DOW	米長期金利	GOLD	OIL	USD/JPY	EUR/JPY	AUD/JPY	NZD/JPY	GBP/JPY	CAD/JPY	CHF/JPY	EUR/USD
2/1	17519.50	1.710%	12673.68	4.8387%	663.00	57.30	120.72	157.22	93.45	82.37	237.49	102.46	97.09	1.3019
2/2	17547.11	1.725%	12653.49	4.8265%	651.50	59.02	121.09	156.97	93.85	82.52	238.15	102.17	97.05	1.2962
2/3														
2/4														
2/5	17344.80	1.720%	12661.74	4.8102%	656.10	58.74	120.33	155.58	93.36	82.33	235.87	101.76	96.38	1.2929
2/6	17406.86	1.750%	12666.31	4.7695%	658.70	58.88	120.10	155.90	93.35	81.72	236.70	101.62	96.85	1.2979
2/7	17292.32	1.740%	12666.87	4.7493%	657.30	57.71	120.64	157.01	93.91	82.81	237.71	101.84	97.21	1.3010
2/8	17292.48	1.735%	12637.63	4.7359%	662.80	59.71	121.04	157.81	94.56	82.85	237.07	102.32	97.13	1.3036
2/9	17504.33	1.690%	12580.83	4.7877%	672.30	59.89	121.69	158.27	94.50	83.11	237.29	103.83	97.55	1.3003
2/10														
2/11														
2/12			12552.55	4.8078%	667.30	57.81	121.89	158.05	94.06	83.34	237.42	103.71	97.24	1.2963
2/13	17621.45	1.735%	12654.85	4.8158%	668.50	59.06	121.14	157.94	94.41	83.56	235.93	103.79	97.14	1.3034
2/14	17752.64	1.725%	12741.86	4.7379%	672.00	58.00	120.76	158.56	94.65	83.87	236.95	103.61	97.40	1.3126
2/15	17897.23	1.735%	12765.01	4.7120%	671.40	57.99	119.18	156.65	93.48	82.69	232.59	102.50	96.51	1.3139
2/16	17875.65	1.700%	12767.57	4.6941%	672.80	59.39	119.31	156.80	93.90	83.24	232.76	102.62	96.65	1.3140
2/17														
2/18														
2/19	17940.09	1.710%					119.52	157.24	93.99	83.85	233.26	102.65	96.96	1.3153
2/20	17939.12	1.705%	12786.64	4.6822%	661.00	58.07	120.01	157.66	94.33	84.13	234.64	102.60	97.06	1.3136
2/21	17913.21	1.685%	12738.41	4.6961%	684.00	60.07	120.92	158.88	95.71	85.34	236.28	104.17	97.65	1.3136
2/22	18108.79	1.665%	12686.02	4.7339%	683.00	60.95	121.55	159.56	95.88	85.65	237.81	104.63	98.14	1.3124
2/23	18188.42	1.670%	12647.48	4.6763%	686.70	61.14	120.97	159.32	95.78	85.48	237.57	104.31	98.12	1.3168
2/24														
2/25														
2/26	18215.35	1.650%	12632.26	4.6307%	689.80	61.39	120.60	159.01	95.69	85.58	236.77	103.91	98.04	1.3184
2/27	18119.92	1.635%	12216.24	4.5148%	687.20	61.46	117.93	156.20	92.93	82.52	231.39	101.06	96.87	1.3241
2/28	17604.12	1.630%	12268.63	4.5696%	672.50	61.79	118.51	156.77	93.34	83.11	232.69	101.34	97.16	1.3227

N225...日経平均、長期金利...日本10年国債利回り、DOW...米ダウ平均、米長期金利...米10年国債利回り、GOLD...NY金先物相場、OIL...NY原油先物相場  
日付表示の青字は土曜日、赤字は日祝日(東京市場)。各数値の表示は青...前日比プラス、白...前日比同じ、赤...前日比マイナス