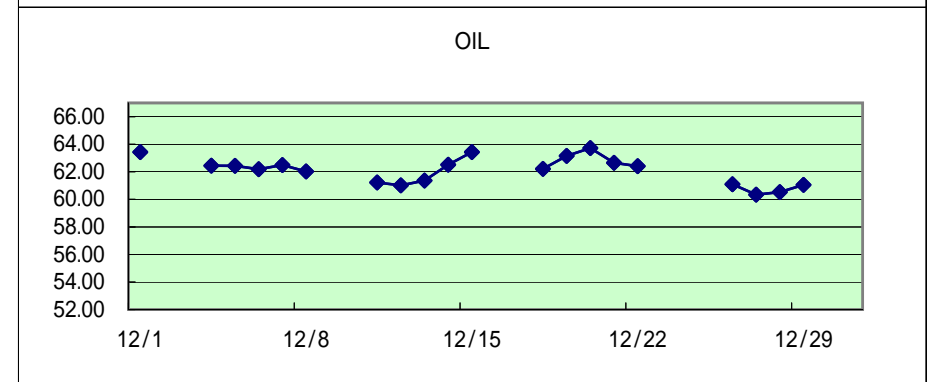
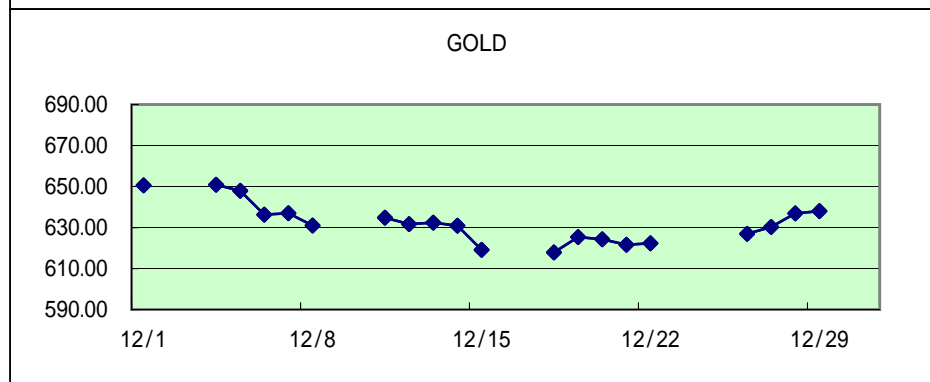
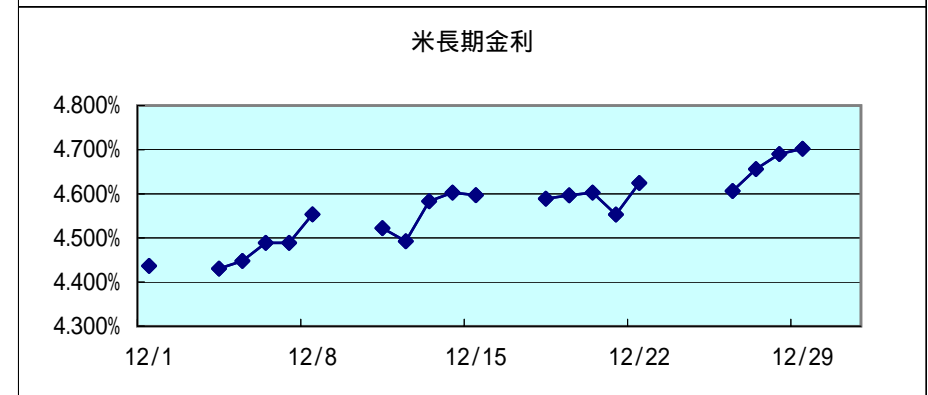
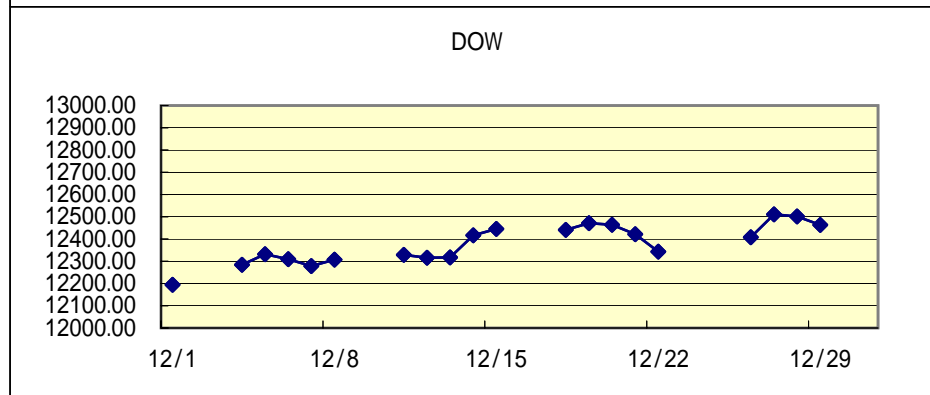
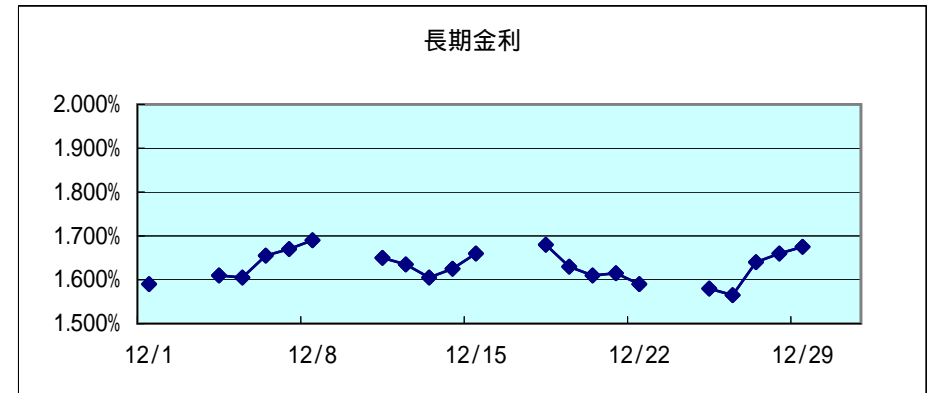
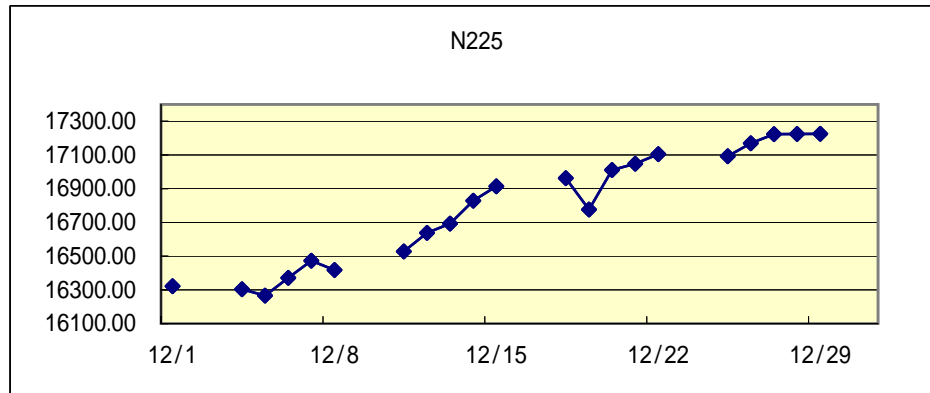


# 関連市場の値動き

作成: 徹底比較 外為会社  
<http://o4-1.com/>



2006

月日	N225	長期金利	DOW	米長期金利	GOLD	OIL	USD/JPY	EUR/JPY	AUD/JPY	NZD/JPY	GBP/JPY	CAD/JPY	CHF/JPY	EUR/USD
12/1	16321.78	1.590%	12194.13	4.4366%	650.60	63.43	115.44	153.93	91.05	79.39	228.61	100.95	96.72	1.3334
12/2														
12/3														
12/4	16303.59	1.610%	12283.85	4.4307%	650.90	62.44	115.28	153.74	90.95	79.56	228.36	101.06	96.59	1.3336
12/5	16265.76	1.605%	12331.60	4.4481%	647.90	62.43	114.85	152.95	90.32	78.77	226.63	100.58	96.29	1.3314
12/6	16371.28	1.655%	12309.25	4.4890%	636.30	62.19	115.26	153.10	90.40	78.98	226.64	100.42	96.35	1.3283
12/7	16473.36	1.670%	12278.41	4.4890%	637.00	62.49	115.22	153.08	90.85	79.24	226.23	100.24	96.39	1.3285
12/8	16417.82	1.690%	12307.49	4.5535%	631.00	62.03	116.35	153.63	91.41	79.90	227.52	101.22	96.56	1.3201
12/9														
12/10														
12/11	16527.99	1.650%	12328.48	4.5221%	634.80	61.22	116.96	154.81	91.72	80.47	228.91	101.91	97.21	1.3236
12/12	16637.78	1.635%	12315.58	4.4927%	631.70	61.02	116.77	155.06	91.82	80.81	230.12	101.32	97.31	1.3278
12/13	16692.93	1.605%	12317.50	4.5830%	632.40	61.37	117.54	155.33	92.33	81.35	231.22	101.57	97.45	1.3215
12/14	16829.20	1.625%	12416.76	4.6028%	630.90	62.51	117.81	154.86	92.20	81.13	230.96	101.79	96.98	1.3142
12/15	16914.31	1.660%	12445.52	4.5968%	619.10	63.43	118.13	154.54	92.29	81.45	230.62	102.03	96.74	1.3080
12/16														
12/17														
12/18	16962.11	1.680%	12441.27	4.5888%	617.90	62.21	118.10	154.73	92.10	81.53	230.12	102.04	96.62	1.3098
12/19	16776.88	1.630%	12471.32	4.5967%	625.40	63.15	118.11	155.80	92.55	82.20	232.50	102.50	97.22	1.3188
12/20	17011.04	1.610%	12463.87	4.6027%	624.30	63.72	118.42	156.01	93.07	82.31	232.70	103.06	97.23	1.3171
12/21	17047.83	1.615%	12421.25	4.5532%	621.60	62.66	118.30	155.85	92.79	82.39	232.03	102.48	97.24	1.3172
12/22	17104.96	1.590%	12343.22	4.6244%	622.30	62.41	118.86	156.11	93.15	83.21	232.81	102.60	97.48	1.3136
12/23														
12/24														
12/25	17092.89	1.580%					118.84	155.97	93.15	83.17	232.69	102.60	97.36	1.3126
12/26	17169.19	1.565%	12407.63	4.6065%	626.90	61.10	119.14	156.06	93.10	83.39	232.80	102.61	97.40	1.3097
12/27	17223.15	1.640%	12510.57	4.6562%	630.30	60.34	118.82	155.87	93.20	83.39	232.46	102.25	96.92	1.3117
12/28	17224.81	1.660%	12501.52	4.6902%	636.90	60.53	118.91	156.38	94.00	83.89	233.40	102.48	97.34	1.3145
12/29	17225.83	1.675%	12463.15	4.7022%	638.00	61.05	118.98	157.09	93.91	83.86	233.26	102.09	97.64	1.3200
12/30														
12/31														

N225...日経平均、長期金利...日本10年国債利回り、DOW...米ダウ平均、米長期金利...米10年国債利回り、GOLD...NY金先物相場、OIL...NY原油先物相場  
日付表示の青字は土曜日、赤字は日祝日(東京市場)。各数値の表示は青...前日比プラス、白...前日比同じ、赤...前日比マイナス