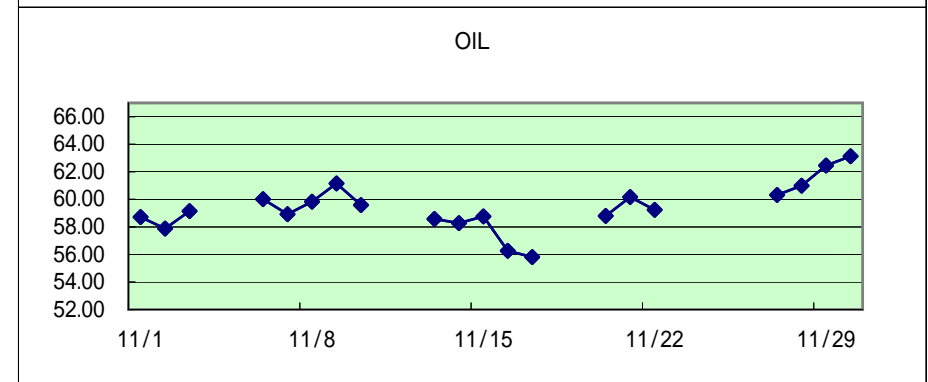
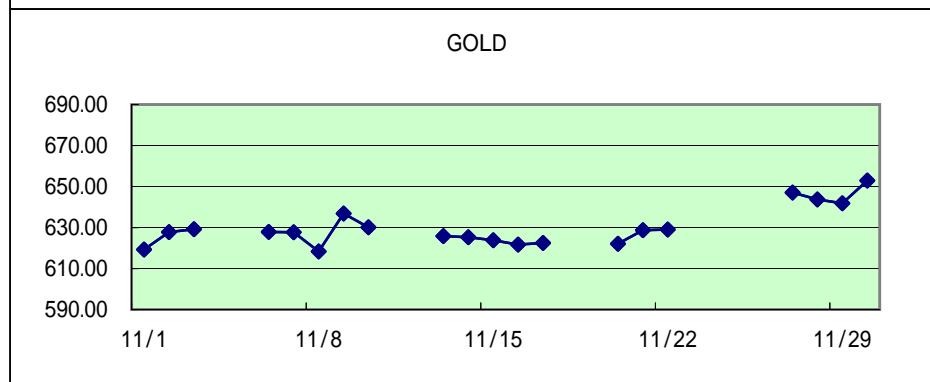
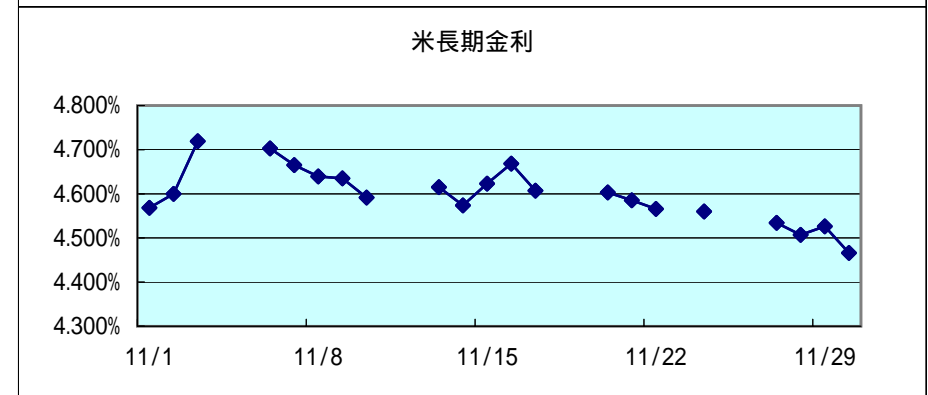
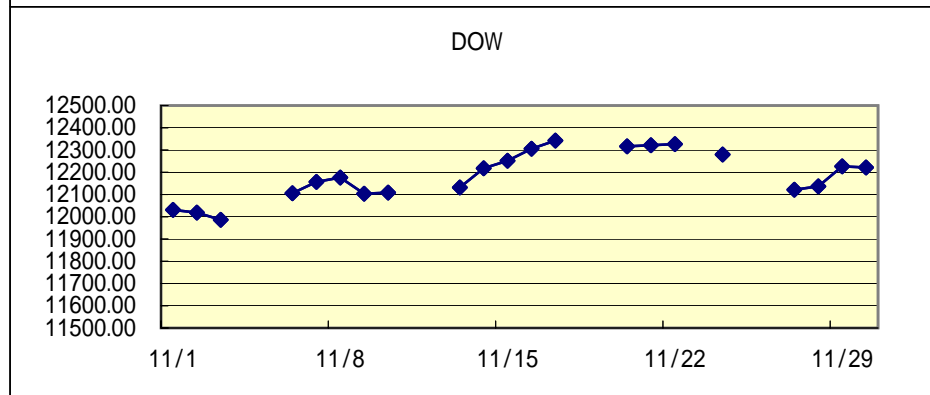
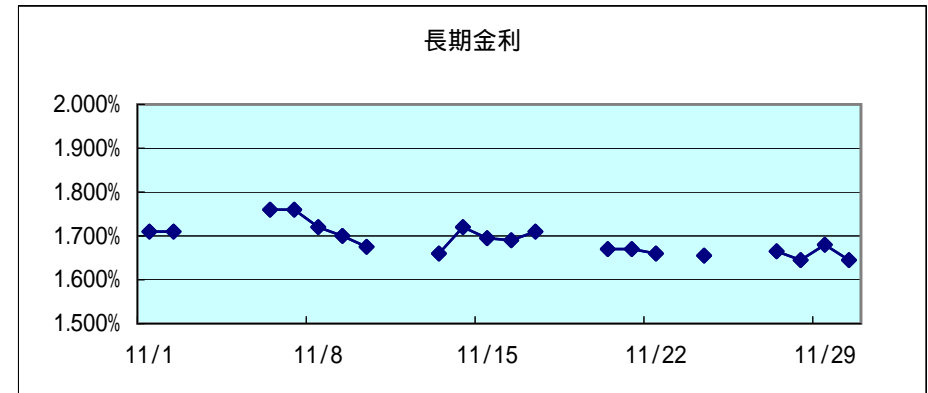
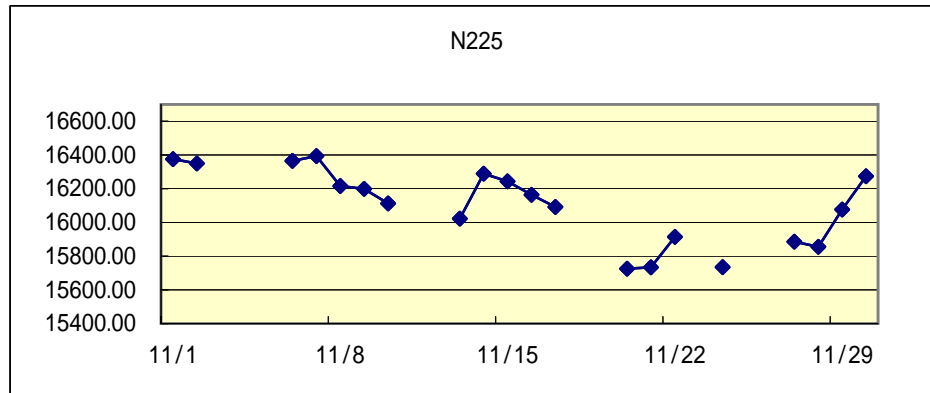


関連市場の値動き

作成: 徹底比較 外為会社
<http://o4-1.com/>



2006

月日	N225	長期金利	DOW	米長期金利	GOLD	OIL	USD/JPY	EUR/JPY	AUD/JPY	NZD/JPY	GBP/JPY	CAD/JPY	CHF/JPY	EUR/USD
11/1	16375.26	1.710%	12031.02	4.5684%	619.30	58.71	117.04	149.34	90.67	78.76	223.45	103.39	94.00	1.2754
11/2	16350.02	1.710%	12018.54	4.5999%	627.80	57.88	117.12	149.64	90.68	78.93	223.50	103.36	94.04	1.2775
11/3			11986.04	4.7190%	629.20	59.14	118.00	150.04	90.80	79.04	224.29	104.42	94.12	1.2714
11/4														
11/5														
11/6	16364.76	1.760%	12105.55	4.7030%	627.90	60.02	118.28	150.46	91.20	79.11	224.41	104.63	94.17	1.2719
11/7	16393.41	1.760%	12156.77	4.6651%	627.70	58.93	117.66	150.31	91.01	78.81	224.25	104.18	94.15	1.2773
11/8	16215.74	1.720%	12176.54	4.6392%	618.30	59.83	117.82	150.31	90.77	78.50	224.51	104.32	94.18	1.2756
11/9	16198.57	1.700%	12103.30	4.6349%	636.80	61.16	117.90	151.24	90.54	78.45	224.64	104.36	94.81	1.2825
11/10	16112.43	1.675%	12108.43	4.5916%	630.10	59.59	117.54	150.93	90.22	78.32	224.57	103.85	94.64	1.2840
11/11														
11/12														
11/13	16022.49	1.660%	12131.88	4.6152%	625.80	58.58	118.12	151.30	90.02	77.86	224.60	103.83	94.89	1.2806
11/14	16289.55	1.720%	12218.01	4.5739%	625.30	58.28	117.55	150.62	89.95	77.86	222.81	103.36	94.51	1.2810
11/15	16243.47	1.695%	12251.71	4.6230%	623.80	58.76	117.99	151.35	90.26	77.83	222.92	103.60	94.69	1.2826
11/16	16163.87	1.690%	12305.82	4.6684%	621.70	56.26	118.19	151.24	90.59	78.56	223.15	103.49	94.71	1.2794
11/17	16091.73	1.710%	12342.56	4.6072%	622.50	55.81	117.70	151.01	90.49	78.24	223.09	102.62	94.63	1.2827
11/18														
11/19														
11/20	15725.94	1.670%	12316.54	4.6032%	622.10	58.80	118.03	151.28	90.90	78.97	223.98	102.97	94.87	1.2814
11/21	15734.14	1.670%	12321.59	4.5855%	628.70	60.17	117.89	151.39	90.89	78.95	223.88	102.84	94.97	1.2841
11/22	15914.23	1.660%	12326.95	4.5658%	629.00	59.24	116.68	151.06	90.48	78.30	223.44	102.24	95.16	1.2941
11/23							116.26	150.49	89.98	77.76	222.72	101.81	94.93	1.2941
11/24	15734.60	1.655%	12280.17	4.5598%			115.83	151.71	90.23	77.80	223.84	102.06	95.81	1.3097
11/25														
11/26														
11/27	15885.38	1.665%	12121.71	4.5343%	647.10	60.32	116.07	152.42	90.36	77.63	224.87	102.51	96.20	1.3132
11/28	15855.26	1.645%	12136.45	4.5069%	643.70	60.99	116.12	153.27	91.02	78.96	226.65	102.73	96.53	1.3197
11/29	16076.20	1.680%	12226.73	4.5264%	641.80	62.46	116.34	153.05	91.12	78.95	226.48	102.23	96.18	1.3152
11/30	16274.33	1.645%	12221.93	4.4659%	652.90	63.13	115.78	153.32	91.35	79.19	227.66	101.51	96.62	1.3242

N225...日経平均、長期金利...日本10年国債利回り、DOW...米ダウ平均、米長期金利...米10年国債利回り、GOLD...NY金先物相場、OIL...NY原油先物相場
日付表示の青字は土曜日、赤字は日祝日(東京市場)。各数値の表示は青...前日比プラス、白...前日比同じ、赤...前日比マイナス