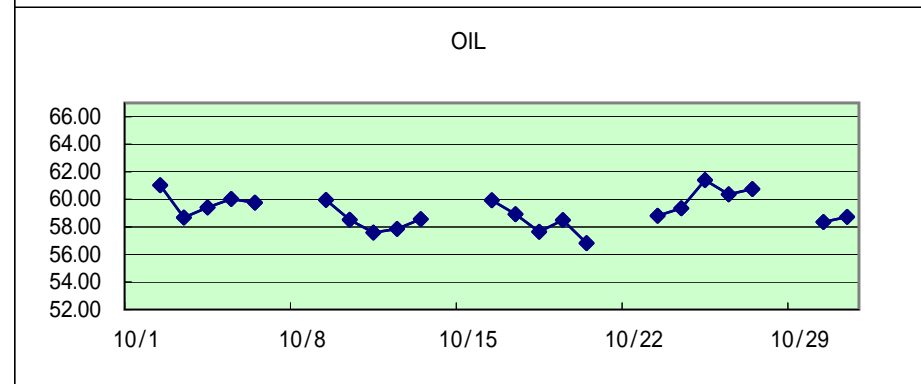
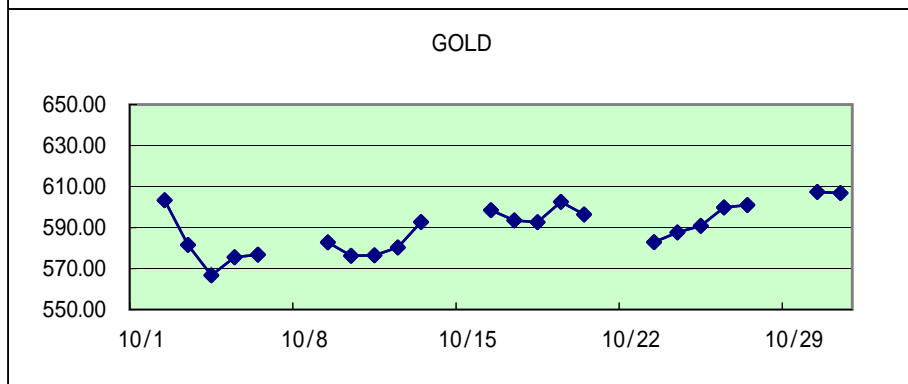
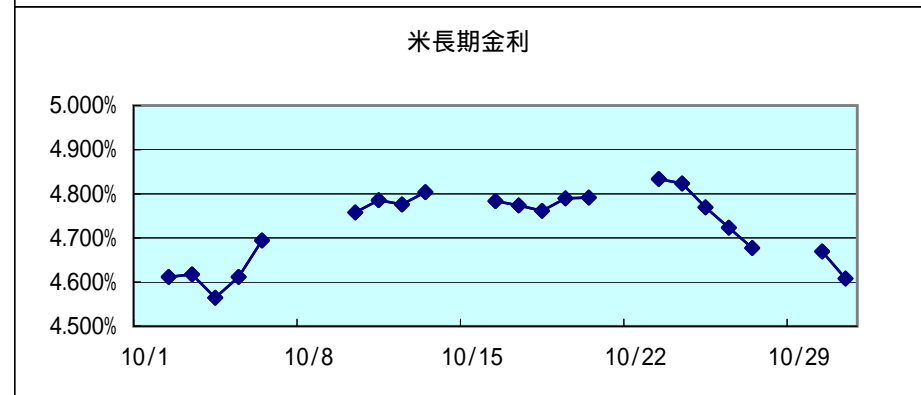
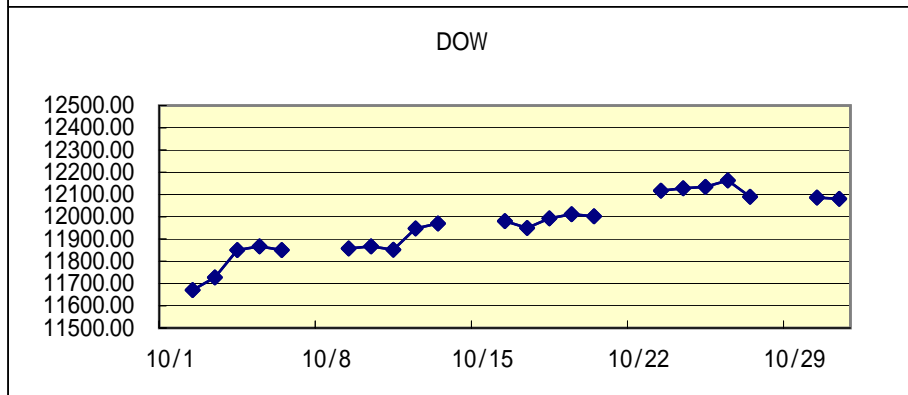
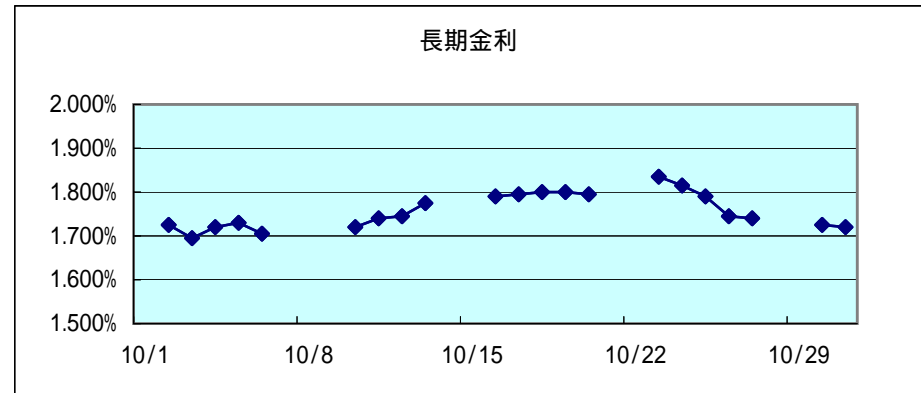
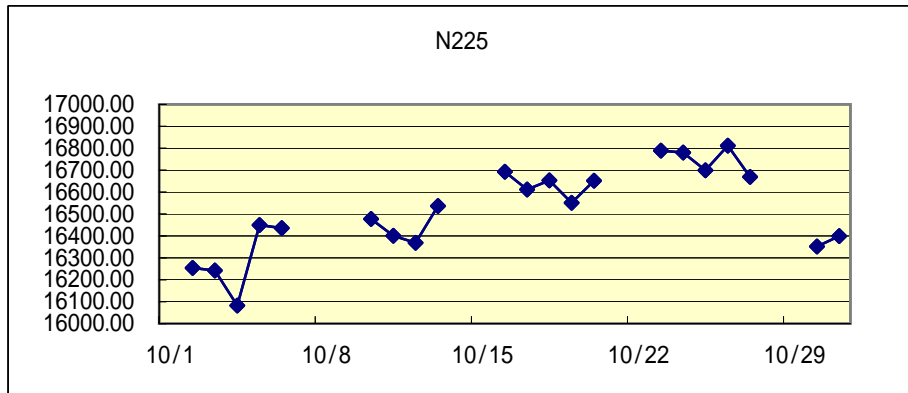


関連市場の値動き

作成:徹底比較 外為会社
<http://o4-1.com/>



2006

月日	N225	長期金利	DOW	米長期金利	GOLD	OIL	USD/JPY	EUR/JPY	AUD/JPY	NZD/JPY	GBP/JPY	CAD/JPY	CHF/JPY	EUR/USD
10/1														
10/2	16254.29	1.725%	11670.35	4.6118%	603.30	61.03	117.62	149.87	88.04	77.50	221.97	105.52	94.61	1.2736
10/3	16242.09	1.695%	11727.34	4.6176%	581.50	58.68	117.89	150.11	87.64	77.54	222.58	105.06	94.65	1.2732
10/4	16082.55	1.720%	11850.61	4.5646%	566.70	59.41	117.91	149.89	87.92	78.18	222.39	104.64	94.41	1.2709
10/5	16449.33	1.730%	11866.69	4.6116%	575.50	60.03	117.62	149.34	87.77	78.16	221.08	104.53	93.96	1.2695
10/6	16436.06	1.705%	11850.21	4.6943%	576.80	59.76	118.99	149.93	88.31	78.34	222.64	105.64	94.38	1.2597
10/7														
10/8														
10/9			11857.81		582.80	59.96	119.09	150.05	88.62	78.23	222.41	105.97	94.42	1.2598
10/10	16477.25	1.720%	11867.17	4.7579%	576.20	58.52	119.69	150.07	89.06	78.86	221.95	105.68	94.29	1.2536
10/11	16400.57	1.740%	11852.13	4.7858%	576.50	57.59	119.72	149.88	88.87	78.97	221.96	105.20	94.10	1.2517
10/12	16368.81	1.745%	11947.70	4.7758%	580.30	57.86	119.33	149.82	89.53	78.79	221.82	105.25	94.05	1.2555
10/13	16536.54	1.775%	11969.51	4.8037%	592.70	58.57	119.62	149.67	89.81	78.61	222.01	105.16	93.96	1.2508
10/14														
10/15														
10/16	16692.76	1.790%	11980.60	4.7837%	598.50	59.94	119.02	149.16	89.70	78.49	221.59	104.62	93.67	1.2531
10/17	16611.59	1.795%	11950.00	4.7736%	593.50	58.93	118.86	149.06	89.51	79.00	222.25	104.15	93.72	1.2540
10/18	16653.00	1.800%	11992.68	4.7616%	592.60	57.65	118.93	149.04	89.75	78.88	222.14	104.67	93.60	1.2528
10/19	16551.36	1.800%	12011.73	4.7896%	602.50	58.50	118.17	149.24	89.71	79.00	221.96	104.85	94.01	1.2628
10/20	16651.63	1.795%	12002.37	4.7915%	596.40	56.82	118.66	149.65	90.02	79.27	223.43	105.39	94.23	1.2608
10/21														
10/22														
10/23	16788.82	1.835%	12116.91	4.8337%	582.90	58.81	119.27	149.72	90.28	79.21	223.54	105.67	94.17	1.2549
10/24	16780.47	1.815%	12127.88	4.8236%	587.60	59.35	119.33	149.87	90.47	79.14	223.59	105.95	94.18	1.2557
10/25	16699.30	1.790%	12134.68	4.7694%	590.80	61.40	119.08	150.08	90.59	78.12	223.60	105.93	94.14	1.2601
10/26	16811.60	1.745%	12163.66	4.7234%	599.80	60.36	118.38	150.25	90.46	77.79	223.82	105.41	94.44	1.2690
10/27	16669.07	1.740%	12090.26	4.6774%	601.00	60.75	117.56	149.78	90.29	77.91	223.11	105.02	94.15	1.2736
10/28														
10/29														
10/30	16351.85	1.725%	12086.50	4.6694%	607.40	58.36	117.46	149.44	90.33	78.15	223.30	104.37	94.07	1.2722
10/31	16399.39	1.720%	12080.73	4.6080%	606.80	58.73	116.95	149.26	90.48	78.36	223.06	104.19	94.00	1.2760

N225...日経平均、長期金利...日本10年国債利回り、DOW...米ダウ平均、米長期金利...米10年国債利回り、GOLD...NY金先物相場、OIL...NY原油先物相場
日付表示の青字は土曜日、赤字は日祝日(東京市場)。各数値の表示は青...前日比プラス、白...前日比同じ、赤...前日比マイナス