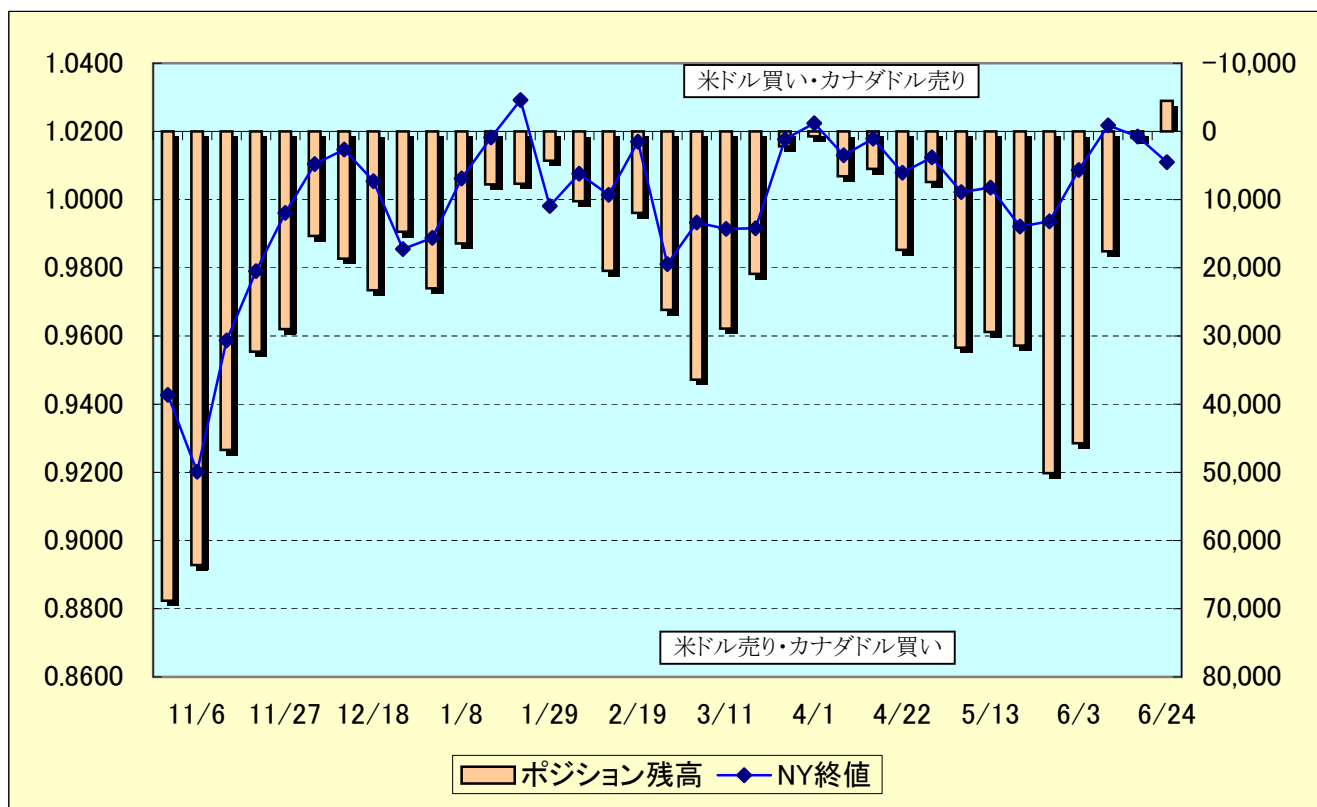


# CME 米ドル/カナダドルの(非商業的)ポジション残高状況

作成者:徹底比較 外為会社

年月日	ポジション残高	NY終値
2008/6/24	-4,489	1.0110
2008/6/17	951	1.0185
2008/6/10	17,579	1.0218
2008/6/3	45,738	1.0087
2008/5/27	50,125	0.9936
2008/5/20	31,418	0.9921
2008/5/13	29,409	1.0035
2008/5/6	31,712	1.0022
2008/4/29	7,428	1.0124
2008/4/22	17,370	1.0079
2008/4/15	5,503	1.0179
2008/4/8	6,564	1.0130
2008/4/1	723	1.0224
2008/3/25	2,178	1.0177
2008/3/18	20,899	0.9916
2008/3/11	28,931	0.9914
2008/3/4	36,406	0.9933
2008/2/26	26,184	0.9811
2008/2/19	11,947	1.0170
2008/2/12	20,435	1.0014
2008/2/5	10,240	1.0076
2008/1/29	4,295	0.9981
2008/1/22	7,677	1.0292
2008/1/15	7,765	1.0182
2008/1/8	16,424	1.0062
2007/12/31	22,998	0.9888
2007/12/24	14,723	0.9855
2007/12/18	23,287	1.0054
2007/12/11	18,664	1.0147
2007/12/4	15,324	1.0104
2007/11/27	28,999	0.9961
2007/11/20	32,292	0.9790
2007/11/13	46,723	0.9587
2007/11/6	63,588	0.9202
2007/10/30	68,831	0.9427



## 現在の状況

6/24現在のCME(米ドル/カナダドル)のポジション残高状況は、米ドル買い・カナダドル売りが少し優勢な状況です。

2007/10/23	71,323	0.9662	2007/1/23	-77,857	1.1804
2007/10/16	76,949	0.9788	2007/1/16	-78,967	1.1757
2007/10/9	83,001	0.9812	2007/1/9	-84,906	1.1769
2007/10/2	69,179	0.9973	2007/1/3	-74,268	1.1732
2007/9/25	59,162	1.0036	2006/12/26	-66,294	1.1612
2007/9/18	79,828	1.0126	2006/12/19	-57,392	1.1525
2007/9/11	58,754	1.0420	2006/12/12	-52,008	1.1522
2007/9/4	51,345	1.0490	2006/12/5	-46,479	1.1422
2007/8/28	45,094	1.0639	2006/11/28	-40,282	1.1303
2007/8/21	40,033	1.0619	2006/11/21	-58,893	1.1461
2007/8/14	47,810	1.0671	2006/11/14	-47,375	1.1373
2007/8/7	51,938	1.0548	2006/11/7	-20,342	1.1294
2007/7/31	49,698	1.0663	2006/10/31	-23,678	1.1219
2007/7/24	76,964	1.0356	2006/10/24	-14,233	1.1263
2007/7/17	67,272	1.0436	2006/10/17	-24,498	1.1407
2007/7/10	67,378	1.0537	2006/10/10	1,859	1.1326
2007/7/3	65,253	1.0611	2006/10/3	9,279	1.1220
2007/6/26	68,863	1.0692	2006/9/26	6,510	1.1140
2007/6/19	58,796	1.0621	2006/9/19	855	1.1268
2007/6/12	62,005	1.0676	2006/9/12	14,782	1.1199
2007/6/5	43,858	1.0631	2006/9/5	27,466	1.1114
2007/5/29	52,020	1.0735	2006/8/29	30,605	1.1075
2007/5/22	38,967	1.0862	2006/8/22	15,493	1.1154
2007/5/15	43,097	1.0984	2006/8/15	8,597	1.1215
2007/5/8	17,819	1.1046	2006/8/8	9,830	1.1233
2007/5/1	8,851	1.1108	2006/8/1	-7,416	1.1304
2007/4/24	-1,631	1.1214	2006/7/25	-5,419	1.1413
2007/4/17	-15,991	1.1306	2006/7/18	9,284	1.1364
2007/4/10	-15,564	1.1471	2006/7/11	11,621	1.1321
2007/4/3	-35,165	1.1584	2006/7/3	36,447	1.1112
2007/3/27	-31,982	1.1564	2006/6/27	30,309	1.1232
2007/3/20	-51,153	1.1554	2006/6/20	23,978	1.1183
2007/3/13	-74,139	1.1762	2006/6/13	33,351	1.1131
2007/3/6	-74,925	1.1765	2006/6/6	22,862	1.1130
2007/2/27	-56,424	1.1668	2006/5/30	31,707	1.0985
2007/2/20	-65,426	1.1699	2006/5/23	15,702	1.1248
2007/2/13	-56,695	1.1664	2006/5/16	19,528	1.1064
2007/2/6	-80,646	1.1816	2006/5/9	28,873	1.0992
2007/1/30	-70,876	1.1786	2006/5/2	32,152	1.1059